

Housing & Apartments Quality Assessment (HQA) January 2020

17-100 Kilcock

Housing Quality Assessment (HQA)

Contents

03	Overview and Universal Design Statement
04	HQA Houses 01 - 60
05	HQA Houses 61 - 120
06	HQA Houses 121 - 182
07	HQA Apartments forming Grd Floor of Duplexes J01 – J13
08	HQA Apartments forming Grd Floor of Duplexes K01 – K56
09	HQA Duplexes L01 – L13
10	HQA Duplexes M01 – M56
11	HQA Apartments Block A-E

Summary of Terrace Unit Types

12	Terrace Unit Types 01-06
13	Terrace Unit Types 07-11

Terrace Unit Types

14	Terrace Unit Type A
15	Terrace Unit Type B1
16	Terrace Unit Type B2
17	Terrace Unit Type C1
18	Terrace Unit Type C2
19	Terrace Unit Type D1
20	Terrace Unit Type E

House Type

21	House Type 01
22	House Type 02a
23	House Type 02b
24	House Type 03
25	House Type 04
26	House Type 05

Apartment and Duplexes Types

27	Apartment Types J
28	Duplex Type L
29	Apartment Type K
30	Duplex Type M
31	Apartment Block A1-A5
32	Apartment Block B1-B5
33	Apartment Block C1-C5
34	Apartment Block D1-D5
35	Apartment Block E1-E5

Housing Quality Assessment

The following Housing Quality Assessment (HQA) demonstrates the compliance of the proposed House Unit Types, Duplexes and Apartment Block, with the Quality Housing for Sustainable Communities and Kildare Dublin Development Plan.

Dwelling Standards

The design and layout of the individual dwellings that are proposed have been grouped into types that will provide a high-quality living environment for residents. These house types accord with the targets and standard as set out in the Quality Housing for Sustainable Communities Guidelines regarding minimum room sizes, dimensions and overall floor areas. Please refer to the schedules and the types reproduced on the following pages.

Dwellings have been designed to provide generous room sizes that create good quality and adaptable living spaces, in some cases exceeding the minimum size to provide ample living quarters.

Open space located to the front of house types creates a sense of community and continuity, whilst regular shaped rear gardens provide generous private amenity to accord with the minimum space standards.

Dwellings that overlook open-space areas have been designed intentionally to match front facades keeping with the overall ethos of the scheme.

All dwellings with direct street frontage have car parking spaces in accord with the targets and standards as set out in the Quality Housing Guidelines, with landscapes and bin structures where necessary.

Privacy

The design accords with the requirements of Quality Housing for Sustainable Communities Guidelines and the Kildare County Council Development Plan 2017-2023 to address privacy and amenity. A minimum separation distance of 22 metres is provided between directly opposing above first floor windows to maintain privacy within the scheme and to adjacent existing housing.

Universal Design Statement

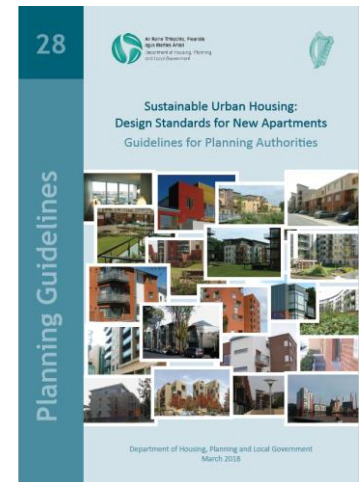
The proposed Strategic Housing Development has endeavoured to comply with the principles of Universal Design throughout the scheme. This is to provide access and use of the development regardless of age, size, ability, or disability. 'Building for Everyone: A Universal Design Approach', 'Universal Design Guidelines for Homes in Ireland', and Technical Guidance Document M have been utilized throughout the design process and has influenced the design of the scheme.

The neighbourhood planning has been influenced by the principles of Universal Design through the following features;

- To provide amenities that meet design requirements to allow people of all ages, sizes, abilities and disabilities to work, shop and enjoy recreation locally or to travel with ease.
- To facilitate a mix of house types, sizes, and tenures that allow all sections of society to remain part of the community and use its facilities throughout the lifecycles.
- To provide alternatives to the private car through the provision of infrastructure to include potential transport interchange, dedicated bus routes, a network of pedestrian and cycle links, and the provision of seating for people to rest at appropriate intervals.
- Being close to public transport and local services.
- To incorporate permeable pedestrian and cycling environment.
- To provide accessible open space for all kinds of activity.

Each unit has been influenced by the principles of Universal Design through the following features where possible;

- The distance from the car parking space to the home has been kept to a minimum and is level or gently sloping
- The approach to all entrances is level or gently sloping when applicable, or where stepped access is provided, full compliance to Part M will be achieved.
- All entrance are illuminated, have level access over the threshold as well as a covered main entrance.
- Communal stairs provide easy access and when homes are reached by a lift, the lift is fully accessible.
- The width of internal doorways and hallways conform to part M.
- There is space for turning a wheelchair in dining areas and living rooms and adequate circulation space for wheelchairs elsewhere.
- All living rooms are at entrance level.
- The design and specification should provide a reasonable route for a potential hoist from a main bedroom to the bathroom.
- The bathroom should be designed for ease of access to the bath, WC and wash basin.
- Living room window glazing begins no higher than 800mm from the floor level and windows are easy to open/ operate.
- Switches, sockets, ventilation and services controls should be at a height usable by all.



Aspect	House No.	House Type	Beds	Net Interior Floor Area	Kitchen/ Living/ Dining Area	Min. Area	Kitchen/ Living/ Dining Width	Min. Width	Bed 1 Area	Min. Area	Width	Min. Width	Bed 2 Area	Min. Area	Width	Min. Width	Bed 3 Area	Min. Area	Width	Min. Width	Bed 4 Area	Min. Area	Width	Min. Width	WC	Bathroom	En-Suite 1	En-Suite 2	Ground Floor Storage	First Floor Storage	Second Floor/Attic Storage	Total Store Area	Min. Area	Garden Area	Min. Garden Area	
north-east	1	B1	3	110.5	40.1	34	3.8	3.8	13.1	13	2.9	2.8	11.4	11.4	2.9	2.8	8.4	7.1	2.1	2.1						2.1	4.7	3.5		1.3	0.7	21	23	5	61.4	60
north-east	2	A	2	90.4	30	30	3.6	3.6	14.8	13	3.2	2.8	12.7	11.4	3.2	2.8										1.8	3	3		0.6	2.3	20	22.9	4	55.1	55
north-east	3	A	2	90.4	30	30	3.6	3.6	14.8	13	3.2	2.8	12.7	11.4	3.2	2.8										1.8	3	3		0.6	2.3	20	22.9	4	55.6	55
north-east	4	A	2	90.4	30	30	3.6	3.6	14.8	13	3.2	2.8	12.7	11.4	3.2	2.8										1.8	3	3		0.6	2.3	20	22.9	4	55.1	55
north-east	5	B1	3	110.5	40.1	34	3.8	3.8	13.1	13	2.9	2.8	11.4	11.4	2.9	2.8	8.4	7.1	2.1	2.1						2.1	4.7	3.5		1.3	0.7	21	23	5	61.4	60
south-west	6	B1	3	110.5	40.1	34	3.8	3.8	13.1	13	2.9	2.8	11.4	11.4	2.9	2.8	8.4	7.1	2.1	2.1						2.1	4.7	3.5		1.3	0.7	21	23	5	61.4	60
south-west	7	A	2	90.4	30	30	3.6	3.6	14.8	13	3.2	2.8	12.7	11.4	3.2	2.8										1.8	3	3		0.6	2.3	20	22.9	4	55.1	55
south-west	8	A	2	90.4	30	30	3.6	3.6	14.8	13	3.2	2.8	12.7	11.4	3.2	2.8										1.8	3	3		0.6	2.3	20	22.9	4	55.6	55
south-west	9	A	2	90.4	30	30	3.6	3.6	14.8	13	3.2	2.8	12.7	11.4	3.2	2.8										1.8	3	3		0.6	2.3	20	22.9	4	55.1	55
south-west	10	B1	3	110.5	40.1	34	3.8	3.8	13.1	13	2.9	2.8	11.4	11.4	2.9	2.8	8.4	7.1	2.1	2.1						2.1	4.7	3.5		1.3	0.7	21	23	5	61.4	60
north-east	11	B1	3	110.5	40.1	34	3.8	3.8	13.1	13	2.9	2.8	11.4	11.4	2.9	2.8	8.4	7.1	2.1	2.1						2.1	4.7	3.5		1.3	0.7	21	23	5	63.3	60
north-east	12	A	2	90.4	30	30	3.6	3.6	14.8	13	3.2	2.8	12.7	11.4	3.2	2.8										1.8	3	3		0.6	2.3	20	22.9	4	55.1	55
north-east	13	A	2	90.4	30	30	3.6	3.6	14.8	13	3.2	2.8	12.7	11.4	3.2	2.8										1.8	3	3		0.6	2.3	20	22.9	4	55.6	55
north-east	14	A	2	90.4	30	30	3.6	3.6	14.8	13	3.2	2.8	12.7	11.4	3.2	2.8										1.8	3	3		0.6	2.3	20	22.9	4	55.6	55
north-east	15	A	2	90.4	30	30	3.6	3.6	14.8	13	3.2	2.8	12.7	11.4	3.2	2.8										1.8	3	3		0.6	2.3	20	22.9	4	55.1	55
north-east	16	B1	3	110.5	40.1	34	3.8	3.8	13.1	13	2.9	2.8	11.4	11.4	2.9	2.8	8.4	7.1	2.1	2.1						2.1	4.7	3.5		1.3	0.7	21	23	5	63.3	60
north-west	17	B1	3	110.5	40.1	34	3.8	3.8	13.1	13	2.9	2.8	11.4	11.4	2.9	2.8	8.4	7.1	2.1	2.1						2.1	4.7	3.5		1.3	0.7	21	23	5	60.6	60
north-west	18	A	2	90.4	30	30	3.6	3.6	14.8	13	3.2	2.8	12.7	11.4	3.2	2.8										1.8	3	3		0.6	2.3	20	22.9	4	55.8	55
north-west	19	A	2	90.4	30	30	3.6	3.6	14.8	13	3.2	2.8	12.7	11.4	3.2	2.8										1.8	3	3		0.6	2.3	20	22.9	4	55.8	55
north-west	20	B1	3	110.5	40.1	34	3.8	3.8	13.1	13	2.9	2.8	11.4	11.4	2.9	2.8	8.4	7.1	2.1	2.1						2.1	4.7	3.5		1.3	0.7	21	23	5	63.8	60
north-west	21	D1	4	113.2	40.1	40	3.8	3.8	13	13	3.5	2.8	18.6	11.4	3.4	2.8	13.3	11.4	4.3	2.8	14.6	7.1	4.3	2.1		2.1	4.2	3.3	4.2	0.9	2.2	3.2	6.3	6	75.1	75
north-west	22	C2	3	124.6	50	34	4.2	3.8	13	13	3.7	2.8	11.6	11.4	3.1	2.8	8.6	7.1	2.3	2.1						2.1	4.3	3.7		1.4	2.3	30	33.7	5	61.5	60
north-west	23	C2	3	124.6	50	34	4.2	3.8	13	13	3.7	2.8	11.6	11.4	3.1	2.8	8.6	7.1	2.3	2.1						2.1	4.3	3.7		1.4	2.3	30	33.7	5	61.5	60
north-west	24	D1	4	113.2	40.1	40	3.8	3.8	13	13	3.5	2.8	18.6	11.4	3.4	2.8	13.3	11.4	4.3	2.8	14.6	7.1	4.3	2.1		2.1	4.2	3.3	4.2	0.9	2.2	3.2	6.3	6	78.1	75
north-west	25	B1	3	110.5	40.1	34	3.8	3.8	13.1	13	2.9	2.8	11.4	11.4	2.9	2.8	8.4	7.1	2.1	2.1						2.1	4.7	3.5		1.3	0.7	21	23	5	84.9	60
north-west	26	A	2	90.4	30	30	3.6	3.6	14.8	13	3.2	2.8	12.7	11.4	3.2	2.8										1.8	3	3		0.6	2.3	20	22.9	4	57.8	55
north-west	27	A	2	90.4	30	30	3.6	3.6	14.8	13	3.2	2.8	12.7	11.4	3.2	2.8										1.8	3	3		0.6	2.3	20	22.9	4	58.3	55
north-west	28	A	2	90.4	30	30	3.6	3.6	14.8	13	3.2	2.8	12.7	11.4	3.2	2.8										1.8	3	3		0.6	2.3	20	22.9	4	57.8	55
north-west	29	A	2	90.4	30	30	3.6	3.6	14.8	13	3.2	2.8	12.7	11.4	3.2	2.8										1.8	3	3		0.6	2.3	20	22.9	4	57.8	55
north-west	30	B1	3	110.5	40.1	34	3.8	3.8	13.1	13	2.9	2.8	11.4	11.4	2.9	2.8	8.4	7.1	2.1	2.1						2.1	4.7	3.5		1.3	0.7	21	23	5	71.9	60
south-east	31	D1	4	113.2	40.1	40	3.8	3.8	13	13	3.5	2.8	18.6	11.4	3.4	2.8	13.3	11.4	4.3	2.8	14.6	7.1	4.3	2.1		2.1	4.2	3.3	4.2	0.9	2.2	3.2	6.3	6	75.1	75
south-east	32	C2	3	124.6	50	34	4.2	3.8	13	13	3.7	2.8	11.6	11.4	3.1	2.8	8.6	7.1	2.3	2.1						2.1	4.3	3.7		1.4	2.3	30	33.7	5	74.3	60
south-east	33	C2	3	124.6	50	34	4.2	3.8	13	13	3.7	2.8	11.6	11.4	3.1	2.8	8.6	7.1	2.3	2.1						2.1	4.3	3.7		1.4	2.3	30	33.7	5	74.3	60
south-east	34	C2	3	124.6	50	34	4.2	3.8	13	13	3.7	2.8	11.6	11.4	3.1	2.8	8.6	7.1	2.3	2.1						2.1	4.3	3.7		1.4	2.3	30	33.7	5	74.3	60
south-east	35	D1	4	113.2	40.1	40	3.8	3.8	13	13	3.5	2.8	18.6	11.4	3.4	2.8	13.3	11.4	4.3	2.8	14.6	7.1	4.3	2.1		2.1	4.2	3.3	4.2	0.9	2.2	3.2	6.3	6	79.8	75
south-east	36	B1	3	110.5	40.1	34	3.8	3.8	13.1	13	2.9	2.8	11.4	11.4	2.9	2.8	8.4	7.1	2.1	2.1						2.1	4.7	3.5		1.3	0.7	21	23	5	66.5	60
south-east	37	A	2	90.4	30	30	3.6	3.6	14.8	13	3.2	2.8	12.7	11.4	3.2	2.8										1.8	3	3		0.6	2.3	20	22.9	4	57.9	55
south-east	38	A	2	90.4	30	30	3.6	3.6	14.8	13	3.2	2.8	12.7	11.4	3.2	2.8										1.8	3	3		0.6	2.3	20	22.9	4	58.3	55
south-east	39	A	2	90.4	30	30	3.6	3.6	14.8	13	3.2	2.8	12.7	11.4	3.2	2.8										1.8	3	3		0.6	2.3	20	22.9	4	57.9	55
south-east	40	B1	3	110.5	40.1	34	3.8	3.8	13.1	13	2.9	2.8	11.4	11.4	2.9	2.8	8.4	7.1	2.1	2.1						2.1	4.7	3.5		1.3	0.7	21	23	5	66.5	60
south-east	41	D1	4	113.2	40.1	40	3.8	3.8	13	13	3.5	2.8	18.6	11.4	3.4	2.8	13.3	11.4	4.3	2.8	14.6	7.1	4.3	2.1		2.1	4.2	3.3	4.2	0.9	2.2	3.2	6.3	6	75.1	75
south-east	42	C2	3	124.6	50	34	4.2	3.8	13	13	3.7	2.8	11.6	11.4	3.1	2.8	8.6	7.1	2.3	2.1						2.1	4.3	3.7		1.4	2.3	30	33.7	5	67.4	60
south-east	43	C2	3	124.6	50	34	4.2	3.8	13	13	3.7	2.8	11.6	11.4	3.1	2.8	8.6	7.1	2.3	2.1						2.1	4.3	3.7		1.4	2.3	30	33.7	5	67.4	60
south-east	44	D1	4	113.2	40.1	40	3.8	3.8	13	13	3.5	2.8	18.6	11.4	3.4	2.8	13.3	11.4	4.3	2.8	14.6	7.1	4.3	2.1		2.1	4.2	3.3	4.2	0.9	2.2	3.2	6.4	6	86.8	75
north-west	45	E	4	150.8	53.9	40	3.8	3.8	16.9	13	3.4	2.8	11.6	11.4	2.9	2.8	7.2	7.1	2.5	2.1	7.7	7.1	2.4	2.1		2.1	4.1	3.6		2.5	8.5		11	6	88.1	75
north-west	46	C2	3	124.6	50	34	4.2	3.8	13	13	3.7	2.8	11.6																							

Aspect	House No.	House Type	Beds	Net Internal Floor Area	Kitchen/ Living/ Dining Area	Min. Area	Kitchen/ Living/ Dining Width	Min. Width	Bed 1 Area	Min. Area	Width	Min. Width	Bed 2 Area	Min. Area	Width	Min. Width	Bed 3 Area	Min. Area	Width	Min. Width	Bed 4 Area	Min. Area	Width	Min. Width	WC	Bathroom	En-Suite 1	En-Suite 2	Ground Floor Storage	First Floor Storage	Second Floor/Attic Storage	Total Store Area	Min. Area	Garden Area	Min Garden Area	
north-east	61	D1	4	113.2	40.1	40	3.8	3.8	19	13	3.5	2.8	18.6	11.4	3.4	2.8	13.3	11.4	4.3	2.8	14.6	7.1	4.3	2.1	2.1	4.2	3.3	4.2	0.9	2.2	3.2	6.3	6	77.6	75	
north-east	62	C2	3	124.6	50	34	4.2	3.8	13	13	3.7	2.8	11.6	11.4	3.1	2.8	8.6	7.1	2.3	2.1					2.1	4.3	3.7		1.4	2.3	30	33.7	5	60.5	60	
north-east	63	C2	3	124.6	50	34	4.2	3.8	13	13	3.7	2.8	11.6	11.4	3.1	2.8	8.6	7.1	2.3	2.1					2.1	4.3	3.7		1.4	2.3	30	33.7	5	60.5	60	
north-east	64	D1	4	113.2	40.1	40	3.8	3.8	19	13	3.5	2.8	18.6	11.4	3.4	2.8	13.3	11.4	4.3	2.8	14.6	7.1	4.3	2.1	2.1	4.2	3.3	4.2	0.9	2.2	3.2	6.3	6	77.6	75	
south-west	65	D1	4	113.2	40.1	40	3.8	3.8	19	13	3.5	2.8	18.6	11.4	3.4	2.8	13.3	11.4	4.3	2.8	14.6	7.1	4.3	2.1	2.1	4.2	3.3	4.2	0.9	2.2	3.2	6.3	6	77.6	75	
south-west	66	C2	3	124.6	50	34	4.2	3.8	13	13	3.7	2.8	11.6	11.4	3.1	2.8	8.6	7.1	2.3	2.1					2.1	4.3	3.7		1.4	2.3	30	33.7	5	60.5	60	
south-west	67	C2	3	124.6	50	34	4.2	3.8	13	13	3.7	2.8	11.6	11.4	3.1	2.8	8.6	7.1	2.3	2.1					2.1	4.3	3.7		1.4	2.3	30	33.7	5	60.5	60	
south-west	68	D1	4	113.2	40.1	40	3.8	3.8	19	13	3.5	2.8	18.6	11.4	3.4	2.8	13.3	11.4	4.3	2.8	14.6	7.1	4.3	2.1	2.1	4.2	3.3	4.2	0.9	2.2	3.2	6.3	6	77.6	75	
south-east	69	D1	4	113.2	40.1	40	3.8	3.8	19	13	3.5	2.8	18.6	11.4	3.4	2.8	13.3	11.4	4.3	2.8	14.6	7.1	4.3	2.1	2.1	4.2	3.3	4.2	0.9	2.2	3.2	6.3	6	77.6	75	
south-east	70	C2	3	124.6	50	34	4.2	3.8	13	13	3.7	2.8	11.6	11.4	3.1	2.8	8.6	7.1	2.3	2.1					2.1	4.3	3.7		1.4	2.3	30	33.7	5	62.3	60	
south-east	71	C2	3	124.6	50	34	4.2	3.8	13	13	3.7	2.8	11.6	11.4	3.1	2.8	8.6	7.1	2.3	2.1					2.1	4.3	3.7		1.4	2.3	30	33.7	5	63	60	
south-east	72	D1	4	113.2	40.1	40	3.8	3.8	19	13	3.5	2.8	18.6	11.4	3.4	2.8	13.3	11.4	4.3	2.8	14.6	7.1	4.3	2.1	2.1	4.2	3.3	4.2	0.9	2.2	3.2	6.3	6	80.1	75	
south-east	73	D1	4	113.2	40.1	40	3.8	3.8	19	13	3.5	2.8	18.6	11.4	3.4	2.8	13.3	11.4	4.3	2.8	14.6	7.1	4.3	2.1	2.1	4.2	3.3	4.2	0.9	2.2	3.2	6.3	6	81.5	75	
south-east	74	C2	3	124.6	50	34	4.2	3.8	13	13	3.7	2.8	11.6	11.4	3.1	2.8	8.6	7.1	2.3	2.1					2.1	4.3	3.7		1.4	2.3	30	33.7	5	60.3	60	
south-east	75	C2	3	124.6	50	34	4.2	3.8	13	13	3.7	2.8	11.6	11.4	3.1	2.8	8.6	7.1	2.3	2.1					2.1	4.3	3.7		1.4	2.3	30	33.7	5	61.3	60	
south-east	76	D1	4	113.2	40.1	40	3.8	3.8	19	13	3.5	2.8	18.6	11.4	3.4	2.8	13.3	11.4	4.3	2.8	14.6	7.1	4.3	2.1	2.1	4.2	3.3	4.2	0.9	2.2	3.2	6.3	6	81.1	75	
south-east	77	D1	4	113.2	40.1	40	3.8	3.8	19	13	3.5	2.8	18.6	11.4	3.4	2.8	13.3	11.4	4.3	2.8	14.6	7.1	4.3	2.1	2.1	4.2	3.3	4.2	0.9	2.2	3.2	6.3	6	81.7	75	
south-east	78	A	2	90.4	30	30	3.6	3.6	14.8	13	3.2	2.8	12.7	11.4	3.2	2.8									1.8				3	0.6	2.3	20	22.9	4	64.6	55
south-east	79	A	2	90.4	30	30	3.6	3.6	14.8	13	3.2	2.8	12.7	11.4	3.2	2.8									1.8				3	0.6	2.3	20	22.9	4	64.4	55
south-east	80	A	2	90.4	30	30	3.6	3.6	14.8	13	3.2	2.8	12.7	11.4	3.2	2.8									1.8				3	0.6	2.3	20	22.9	4	64.5	55
south-east	81	A	2	113.2	40.1	40	3.8	3.8	19	13	3.5	2.8	18.6	11.4	3.4	2.8	13.3	11.4	4.3	2.8	14.6	7.1	4.3	2.1	2.1	4.2	3.3	4.2	0.9	2.2	3.2	6.3	6	75.5	75	
south-east	82	B2	3	122.5	52.1	34	3.8	3.8	13.1	13	2.9	2.8	11.4	11.4	2.9	2.8	8.4	7.1	2.1	2.1					2.1	4.7	3.5		1.3	0.7	26	28	5	69.2	60	
south-east	83	C1	3	109.4	35.1	34	4.2	3.8	13	13	3.7	2.8	11.6	11.4	3.1	2.8	8.6	7.1	2.3	2.1					2.1	4.3	3.7		1	2.3	28	31.3	5	79.4	60	
south-east	84	B2	3	122.5	52.1	34	3.8	3.8	13.1	13	2.9	2.8	11.4	11.4	2.9	2.8	8.4	7.1	2.1	2.1					2.1	4.7	3.5		1.3	0.7	26	28	5	73.3	60	
south-east	85	B2	3	122.5	52.1	34	3.8	3.8	13.1	13	2.9	2.8	11.4	11.4	2.9	2.8	8.4	7.1	2.1	2.1					2.1	4.7	3.5		1.3	0.7	26	28	5	77.3	60	
south-east	86	C1	3	109.4	35.1	34	4.2	3.8	13	13	3.7	2.8	11.6	11.4	3.1	2.8	8.6	7.1	2.3	2.1					2.1	4.3	3.7		1	2.3	28	31.3	5	88.6	60	
south-east	87	B2	3	122.5	52.1	34	3.8	3.8	13.1	13	2.9	2.8	11.4	11.4	2.9	2.8	8.4	7.1	2.1	2.1					2.1	4.7	3.5		1.3	0.7	26	28	5	60.4	60	
south-west	88	B1	3	110.5	40.1	34	3.8	3.8	13.1	13	2.9	2.8	11.4	11.4	2.9	2.8	8.4	7.1	2.1	2.1					2.1	4.7	3.5		1.3	0.7	21	23	5	63.3	60	
south-west	89	A	2	90.4	30	30	3.6	3.6	14.8	13	3.2	2.8	12.7	11.4	3.2	2.8									1.8				3	0.6	2.3	20	22.9	4	55.1	55
south-west	90	A	2	90.4	30	30	3.6	3.6	14.8	13	3.2	2.8	12.7	11.4	3.2	2.8									1.8				3	0.6	2.3	20	22.9	4	55.6	55
south-west	91	A	2	90.4	30	30	3.6	3.6	14.8	13	3.2	2.8	12.7	11.4	3.2	2.8									1.8				3	0.6	2.3	20	22.9	4	55.1	55
south-west	92	B1	3	110.5	40.1	34	3.8	3.8	13.1	13	2.9	2.8	11.4	11.4	2.9	2.8	8.4	7.1	2.1	2.1					2.1	4.7	3.5		1.3	0.7	21	23	5	63.3	60	
south-west	93	B1	3	110.5	40.1	34	3.8	3.8	13.1	13	2.9	2.8	11.4	11.4	2.9	2.8	8.4	7.1	2.1	2.1					2.1	4.7	3.5		1.3	0.7	21	23	5	70	60	
south-west	94	C1	3	109.4	35.1	34	4.2	3.8	13	13	3.7	2.8	11.6	11.4	3.1	2.8	8.6	7.1	2.3	2.1					2.1	4.3	3.7		1	2.3	28	31.3	5	65.7	60	
south-west	95	C1	3	109.4	35.1	34	4.2	3.8	13	13	3.7	2.8	11.6	11.4	3.1	2.8	8.6	7.1	2.3	2.1					2.1	4.3	3.7		1	2.3	28	31.3	5	66.1	60	
south-west	96	C1	3	109.4	35.1	34	4.2	3.8	13	13	3.7	2.8	11.6	11.4	3.1	2.8	8.6	7.1	2.3	2.1					2.1	4.3	3.7		1	2.3	28	31.3	5	65.7	60	
south-west	97	B1	3	110.5	40.1	34	3.8	3.8	13.1	13	2.9	2.8	11.4	11.4	2.9	2.8	8.4	7.1	2.1	2.1					2.1	4.7	3.5		1.3	0.7	21	23	5	70	60	
south-west	98	B1	3	110.5	40.1	34	3.8	3.8	13.1	13	2.9	2.8	11.4	11.4	2.9	2.8	8.4	7.1	2.1	2.1					2.1	4.7	3.5		1.3	0.7	21	23	5	70.1	60	
south-west	99	C1	3	109.4	35.1	34	4.2	3.8	13	13	3.7	2.8	11.6	11.4	3.1	2.8	8.6	7.1	2.3	2.1					2.1	4.3	3.7		1	2.3	28	31.3	5	65.7	60	
south-west	100	C1	3	109.4	35.1	34	4.2	3.8	13	13	3.7	2.8	11.6	11.4	3.1	2.8	8.6	7.1	2.3	2.1					2.1	4.3	3.7		1	2.3	28	31.3	5	66.1	60	
south-west	101	C1	3	109.4	35.1	34	4.2	3.8	13	13	3.7	2.8	11.6	11.4	3.1	2.8	8.6	7.1	2.3	2.1					2.1	4.3	3.7		1	2.3	28	31.3	5	65.7	60	
south-west	102	B1	3	110.5	40.1	34	3.8	3.8	13.1	13	2.9	2.8	11.4	11.4	2.9	2.8	8.4	7.1	2.1	2.1					2.1	4.7	3.5		1.3	0.7	21	23	5	70.1	60	
north-west	103	A	3	122.5	52.1	34	3.8	3.8	13.1	13	2.9	2.8	11.4	11.4	2.9	2.8	8.4	7.1	2.1	2.1					2.1	4.7	3.5		1.3	0.6	21	22.9	5	64.6	60	
north-west	104	A	3	122.5	52.1	34	3.8	3.8	13.1	13	2.9	2.8	11.4	11.4	2.9	2.8	8.4	7.1	2.1	2.1					2.1	4.7	3.5		1.3	0.6	21	22.9	5	64.1	60	
north-west	105	D1	4	113.2	40.1	40	3.8	3.8	19	13	3.5	2.8	18.6	11.4	3.4	2.8	13.3	11.4	4.3	2.8	14.6	7.1														

Aspect	House No.	House Type	Beds	Net Internal Floor Area	Kitchen/ Living/ Dining Area	Min. Area	Kitchen/ Living/ Dining Width	Min. Width	Bed 1 Area	Min. Area	Width	Min. Width	Bed 2 Area	Min. Area	Width	Min. Width	Bed 3 Area	Min. Area	Width	Min. Width	Bed 4 Area	Min. Area	Width	Min. Width	WC	Bathroom	En-Suite 1	En-Suite 2	Ground Floor Storage	First Floor Storage	Second Floor/Attic Storage	Total Store Area	Min. Area	Garden Area	Min. Garden Area
north-west	121	02b	3	139	49.3	37	3.8	3.8	16.1	13	3.8	2.8	13.4	11.4	3.7	2.8	12.1	11.4	2.8	2.8					2.3	6.1	3.2		1.3	6.5		7.8	6	89.4	60
north-west	122	02b	3	125.6	38.5	34	3.8	3.8	13.5	13	3.5	2.8	11.9	11.4	3.2	2.8	7.8	7.1	2.7	2.1					3	6.4	3.2		1.3	3.7		5	5	89.2	60
north-west	123	D1	4	113.2	40.1	40	3.8	3.8	19	13	3.5	2.8	18.6	11.4	3.4	2.8	13.3	11.4	4.3	2.8	14.6	7.1	4.3	2.1	2.1	4.2	3.3	4.2	0.9	2.2	3.2	6.3	6	75.1	75
north-west	124	C1	3	109.4	35.1	34	4.2	3.8	13	13	3.7	2.8	11.6	11.4	3.1	2.8	8.6	7.1	2.3	2.1					2.1	4.3	3.7		1	2.3	28	31.3	5	71	60
north-west	125	C1	3	109.4	35.1	34	4.2	3.8	13	13	3.7	2.8	11.6	11.4	3.1	2.8	8.6	7.1	2.3	2.1					2.1	4.3	3.7		1	2.3	28	31.3	5	71	60
north-west	126	D1	4	113.2	40.1	40	3.8	3.8	19	13	3.5	2.8	18.6	11.4	3.4	2.8	13.3	11.4	4.3	2.8	14.6	7.1	4.3	2.1	2.1	4.2	3.3	4.2	0.9	2.2	3.2	6.3	6	75.1	75
north-west	127	4	3	122.5	52.1	34	3.8	3.8	13.1	13	2.9	2.8	11.4	11.4	2.9	2.8	8.4	7.1	2.1	2.1					2.1	4.7	3.5		1.3	0.6	21	22.9	5	64.1	60
north-west	128	4	3	122.5	52.1	34	3.8	3.8	13.1	13	2.9	2.8	11.4	11.4	2.9	2.8	8.4	7.1	2.1	2.1					2.1	4.7	3.5		1.3	0.6	21	22.9	5	64.1	60
south-east	129	4	3	122.5	52.1	34	3.8	3.8	13.1	13	2.9	2.8	11.4	11.4	2.9	2.8	8.4	7.1	2.1	2.1					2.1	4.7	3.5		1.3	0.6	21	22.9	5	64.1	60
south-east	130	4	3	122.5	52.1	34	3.8	3.8	13.1	13	2.9	2.8	11.4	11.4	2.9	2.8	8.4	7.1	2.1	2.1					2.1	4.7	3.5		1.3	0.6	21	22.9	5	60	60
south-east	131	B1	3	110.5	40.1	34	3.8	3.8	13.1	13	2.9	2.8	11.4	11.4	2.9	2.8	8.4	7.1	2.1	2.1					2.1	4.7	3.5		1.3	0.7	21	23	5	76.5	60
south-east	132	C1	3	109.4	35.1	34	4.2	3.8	13	13	3.7	2.8	11.6	11.4	3.1	2.8	8.6	7.1	2.3	2.1					2.1	4.3	3.7		1	2.3	28	31.3	5	71	60
south-east	133	C1	3	109.4	35.1	34	4.2	3.8	13	13	3.7	2.8	11.6	11.4	3.1	2.8	8.6	7.1	2.3	2.1					2.1	4.3	3.7		1	2.3	28	31.3	5	71.5	60
south-east	134	C1	3	109.4	35.1	34	4.2	3.8	13	13	3.7	2.8	11.6	11.4	3.1	2.8	8.6	7.1	2.3	2.1					2.1	4.3	3.7		1	2.3	28	31.3	5	71	60
south-east	135	B1	3	110.5	40.1	34	3.8	3.8	13.1	13	2.9	2.8	11.4	11.4	2.9	2.8	8.4	7.1	2.1	2.1					2.1	4.7	3.5		1.3	0.7	21	23	5	61.3	60
south-east	136	02a	3	125.6	38.5	34	3.8	3.8	13.5	13	3.5	2.8	11.9	11.4	3.2	2.8	7.8	7.1	2.7	2.1					3	6.4	3.2		1.3	3.7		5	5	88.2	60
south-east	137	02a	3	139	49.3	37	3.8	3.8	16.1	13	3.8	2.8	13.4	11.4	3.4	2.8	12.1	11.4	2.8	2.8					2.3	6.1	3.2		1.3	6.5		7.8	6	76.9	60
south-east	138	3	4	142.4	49.4	43	4.5	3.8	13.5	13	2.9	2.8	12.7	11.4	3.5	2.8	10.6	7.1	3.1	2.1	7.1	7.1	2.4	2.1	3	4.8	3	2.8	1.4	3.8	27	32.2	9	90.8	75
north-west	139	02b	3	139	49.3	37	3.8	3.8	16.1	13	3.8	2.8	13.4	11.4	3.4	2.8	12.1	11.4	2.8	2.8					2.3	6.1	3.2		1.3	6.5		7.8	6	73.2	60
north-west	140	02b	3	125.6	38.5	34	3.8	3.8	13.5	13	3.5	2.8	11.9	11.4	3.2	2.8	7.8	7.1	2.7	2.1					3	6.4	3.2		1.3	3.7		5	5	110.4	60
north-west	141	4	3	122.5	52.1	34	3.8	3.8	13.1	13	2.9	2.8	11.4	11.4	2.9	2.8	8.4	7.1	2.1	2.1					2.1	4.7	3.5		1.3	0.6	21	22.9	5	87.2	60
north-west	142	4	3	122.5	52.1	34	3.8	3.8	13.1	13	2.9	2.8	11.4	11.4	2.9	2.8	8.4	7.1	2.1	2.1					2.1	4.7	3.5		1.3	0.6	21	22.9	5	60.1	60
north-west	143	B1	3	110.5	40.1	34	3.8	3.8	13.1	13	2.9	2.8	11.4	11.4	2.9	2.8	8.4	7.1	2.1	2.1					2.1	4.7	3.5		1.3	0.7	21	23	5	69.6	60
north-west	144	A	2	90.4	30	30	3.6	3.6	14.8	13	3.2	2.8	12.7	11.4	3.2	2.8									1.8		3	3	0.6	2.3	20	22.9	4	60.1	55
north-west	145	A	2	90.4	30	30	3.6	3.6	14.8	13	3.2	2.8	12.7	11.4	3.2	2.8									1.8		3	3	0.6	2.3	20	22.9	4	60.1	55
north-west	146	B1	3	110.5	40.1	34	3.8	3.8	13.1	13	2.9	2.8	11.4	11.4	2.9	2.8	8.4	7.1	2.1	2.1					2.1	4.7	3.5		1.3	0.7	21	23	5	69.5	60
north-west	147	D1	4	113.2	40.1	40	3.8	3.8	19	13	3.5	2.8	18.6	11.4	3.4	2.8	13.3	11.4	4.3	2.8	14.6	7.1	4.3	2.1	2.1	4.2	3.3	4.2	0.9	2.2	3.2	6.3	6	75.1	75
north-west	148	C1	3	109.4	35.1	34	4.2	3.8	13	13	3.7	2.8	11.6	11.4	3.1	2.8	8.6	7.1	2.3	2.1					2.1	4.3	3.7		1	2.3	28	31.3	5	71	60
north-west	149	C1	3	109.4	35.1	34	4.2	3.8	13	13	3.7	2.8	11.6	11.4	3.1	2.8	8.6	7.1	2.3	2.1					2.1	4.3	3.7		1	2.3	28	31.3	5	71.5	60
north-west	150	C1	3	109.4	35.1	34	4.2	3.8	13	13	3.7	2.8	11.6	11.4	3.1	2.8	8.6	7.1	2.3	2.1					2.1	4.3	3.7		1	2.3	28	31.3	5	71	60
north-west	151	D1	4	113.2	40.1	40	3.8	3.8	19	13	3.5	2.8	18.6	11.4	3.4	2.8	13.3	11.4	4.3	2.8	14.6	7.1	4.3	2.1	2.1	4.2	3.3	4.2	0.9	2.2	3.2	6.3	6	75.1	75
south-east	152	D1	4	113.2	40.1	40	3.8	3.8	19	13	3.5	2.8	18.6	11.4	3.4	2.8	13.3	11.4	4.3	2.8	14.6	7.1	4.3	2.1	2.1	4.2	3.3	4.2	0.9	2.2	3.2	6.3	6	75.1	75
south-east	153	C1	3	109.4	35.1	34	4.2	3.8	13	13	3.7	2.8	11.6	11.4	3.1	2.8	8.6	7.1	2.3	2.1					2.1	4.3	3.7		1	2.3	28	31.3	5	71	60
south-east	154	C1	3	109.4	35.1	34	4.2	3.8	13	13	3.7	2.8	11.6	11.4	3.1	2.8	8.6	7.1	2.3	2.1					2.1	4.3	3.7		1	2.3	28	31.3	5	71.5	60
south-east	155	C1	3	109.4	35.1	34	4.2	3.8	13	13	3.7	2.8	11.6	11.4	3.1	2.8	8.6	7.1	2.3	2.1					2.1	4.3	3.7		1	2.3	28	31.3	5	71	60
south-east	156	D1	4	113.2	40.1	40	3.8	3.8	19	13	3.5	2.8	18.6	11.4	3.4	2.8	13.3	11.4	4.3	2.8	14.6	7.1	4.3	2.1	2.1	4.2	3.3	4.2	0.9	2.2	3.2	6.3	6	75.1	75
south-east	157	B2	3	122.5	52.1	34	3.8	3.8	13.1	13	2.9	2.8	11.4	11.4	2.9	2.8	8.4	7.1	2.1	2.1					2.1	4.7	3.5		1.3	0.7	26	28	5	69.3	60
south-east	158	C1	3	109.4	35.1	34	4.2	3.8	13	13	3.7	2.8	11.6	11.4	3.1	2.8	8.6	7.1	2.3	2.1					2.1	4.3	3.7		1	2.3	28	31.3	5	77.9	60
south-east	159	B2	3	122.5	52.1	34	3.8	3.8	13.1	13	2.9	2.8	11.4	11.4	2.9	2.8	8.4	7.1	2.1	2.1					2.1	4.7	3.5		1.3	0.7	26	28	5	69.3	60
south-east	160	D1	4	113.2	40.1	40	3.8	3.8	19	13	3.5	2.8	18.6	11.4	3.4	2.8	13.3	11.4	4.3	2.8	14.6	7.1	4.3	2.1	2.1	4.2	3.3	4.2	0.9	2.2	3.2	6.3	6	82.2	75
south-east	161	C1	3	109.4	35.1	34	4.2	3.8	13	13	3.7	2.8	11.6	11.4	3.1	2.8	8.6	7.1	2.3	2.1					2.1	4.3	3.7		1	2.3	28	31.3	5	82.8	60
south-east	162	C1	3	109.4	35.1	34	4.2	3.8	13	13	3.7	2.8	11.6	11.4	3.1	2.8	8.6	7.1	2.3	2.1					2.1	4.3	3.7		1	2.3	28	31.3	5	83.4	60
south-east	163	C1	3	109.4	35.1	34	4.2	3.8	13	13	3.7	2.8	11.6	11.4	3.1	2.8	8.6	7.1	2.3	2.1					2.1	4.3	3.7		1	2.3	28	31.3	5	80	60
south-east	164	B1	3	110.5	40.1	34	3.8	3.8	13.1	13	2.9	2.8	11.4	11.4	2.9	2.8	8.4	7.1	2.1	2.1					2.1	4.7	3.5		1.3	0.7	21	23	5	60.7	60
south-east	165	02a	3	125.6	38.5	34	3.8	3.8	13.5	13	3.5	2.8	11.9	11.4	3.2	2																			

Aspect	House No.	House Type	Bed No.	Net Internal Floor Area	Kitchen/ Living/ Dining Area	Min. Area	Kitchen/ Living/ Dining Width	Min. Width	Bed 1 Area	Min. Area	Width	Min. Width	Bed 2 Area	Min. Area	Width	Min. Width	Bed 3 Area	Min. Area	Width	Min. Width	WC	Bathroom	En-Suite 1	Ground Floor Storage	First Floor Storage	Second Floor Storage	Total Store Area	Min. Area	Garden Area	Min Garden Area
north-east	J/01	J	1	58	24.2	23	5.1	3.3	15.2	11.4	3.9	2.8									5.6			3			3	3	20.7	5
north-east	J/02	J	1	58	24.2	23	5.1	3.3	15.2	11.4	3.9	2.8									5.6			3			3	3	20.7	5
north-east	J/03	J	1	58	24.2	23	5.1	3.3	15.2	11.4	3.9	2.8									5.6			3			3	3	20.7	5
north-east	J/04	J	1	58	24.2	23	5.1	3.3	15.2	11.4	3.9	2.8									5.6			3			3	3	20.7	5
north-east	J/05	J	1	58	24.2	23	5.1	3.3	15.2	11.4	3.9	2.8									5.6			3			3	3	20.7	5
north-east	J/06	J	1	58	24.2	23	5.1	3.3	15.2	11.4	3.9	2.8									5.6			3			3	3	20.7	5
north-east	J/07	J	1	58	24.2	23	5.1	3.3	15.2	11.4	3.9	2.8									5.6			3			3	3	20.7	5
south-west	J/08	J	1	58	24.2	23	5.1	3.3	15.2	11.4	3.9	2.8									5.6			3			3	3	20.7	5
south-west	J/09	J	1	58	24.2	23	5.1	3.3	15.2	11.4	3.9	2.8									5.6			3			3	3	20.7	5
south-west	J/10	J	1	58	24.2	23	5.1	3.3	15.2	11.4	3.9	2.8									5.6			3			3	3	20.7	5
south-west	J/11	J	1	58	24.2	23	5.1	3.3	15.2	11.4	3.9	2.8									5.6			3			3	3	20.7	5
south-west	J/12	J	1	58	24.2	23	5.1	3.3	15.2	11.4	3.9	2.8									5.6			3			3	3	20.7	5
south-west	J/13	J	1	58	24.2	23	5.1	3.3	15.2	11.4	3.9	2.8									5.6			3			3	3	20.7	5

* 2 Bed Units are to 2Bed 3 Person Units

Housing Quality Assessment Apartments forming the Ground Floor of Duplexes J/01 – J/13

Housing Quality Assessment Apartments forming the Ground Floor of Duplexes K/01 – K/56

Aspect	House No.	House Type	Bed No.	Net Internal Floor Area	Kitchen/Living/Dining Area	Min. Area	Kitchen/Living/Dining Width	Min. Width	Bed 1 Area	Min. Area	Width	Min. Width	Bed 2 Area	Min. Area	Width	Min. Width	Bed 3 Area	Min. Area	Width	Min. Width	WC	Bathroom	En-Suite 1	Ground Floor Storage	First Floor Storage	Second Floor Storage	Attic Space	Total Store Area	Min. Area	Garden Area	Min Garden Area
south-west	L/01	L	2	96.8	29.1	28	3.9	3.6	14.2	13	2.8	2.8	9.5	7.1	2.8	2.1					5.6	2.8			3.3	2.8		6.1	5	6.4	6
south-west	L/02	L	2	96.8	29.1	28	3.9	3.6	14.2	13	2.8	2.8	9.5	7.1	2.8	2.1					5.6	2.8			3.3	2.8		6.1	5	6.4	6
south-west	L/03	L	2	96.8	29.1	28	3.9	3.6	14.2	13	2.8	2.8	9.5	7.1	2.8	2.1					5.6	2.8			3.3	2.8		6.1	5	6.4	6
south-west	L/04	L	2	96.8	29.1	28	3.9	3.6	14.2	13	2.8	2.8	9.5	7.1	2.8	2.1					5.6	2.8			3.3	2.8		6.1	5	6.4	6
south-west	L/05	L	2	96.8	29.1	28	3.9	3.6	14.2	13	2.8	2.8	9.5	7.1	2.8	2.1					5.6	2.8			3.3	2.8		6.1	5	6.4	6
south-west	L/06	L	2	96.8	29.1	28	3.9	3.6	14.2	13	2.8	2.8	9.5	7.1	2.8	2.1					5.6	2.8			3.3	2.8		6.1	5	6.4	6
south-west	L/07	L	2	96.8	29.1	28	3.9	3.6	14.2	13	2.8	2.8	9.5	7.1	2.8	2.1					5.6	2.8			3.3	2.8		6.1	5	6.4	6
north-east	L/08	L	2	96.8	29.1	28	3.9	3.6	14.2	13	2.8	2.8	9.5	7.1	2.8	2.1					5.6	2.8			3.3	2.8		6.1	5	6.4	6
north-east	L/09	L	2	96.8	29.1	28	3.9	3.6	14.2	13	2.8	2.8	9.5	7.1	2.8	2.1					5.6	2.8			3.3	2.8		6.1	5	6.4	6
north-east	L/10	L	2	96.8	29.1	28	3.9	3.6	14.2	13	2.8	2.8	9.5	7.1	2.8	2.1					5.6	2.8			3.3	2.8		6.1	5	6.4	6
north-east	L/11	L	2	96.8	29.1	28	3.9	3.6	14.2	13	2.8	2.8	9.5	7.1	2.8	2.1					5.6	2.8			3.3	2.8		6.1	5	6.4	6
north-east	L/12	L	2	96.8	29.1	28	3.9	3.6	14.2	13	2.8	2.8	9.5	7.1	2.8	2.1					5.6	2.8			3.3	2.8		6.1	5	6.4	6
north-east	L/13	L	2	96.8	29.1	28	3.9	3.6	14.2	13	2.8	2.8	9.5	7.1	2.8	2.1					5.6	2.8			3.3	2.8		6.1	5	6.4	6

* 2 Bed Units are to 2Bed 3 Person Units

Housing Quality Assessment Apartments Duplexes M/01 – M/56

Floor	Apt. No.	Apt. Type	Unit Type	No. of Persons	Unit Area
GF	A1		2 Bed	4	91.76
FF	A2		2 Bed	4	91.76
SF	A3		2 Bed	4	91.76
TF	A4		2 Bed	4	91.76
FF	A5		2 Bed	4	91.76
GF	B1		2 Bed	4	91.76
FF	B2		2 Bed	4	91.76
SF	B3		2 Bed	4	91.76
TF	B4		2 Bed	4	91.76
FF	B5		2 Bed	4	91.76
GF	C1		2 Bed	3	69.34
FF	C2		2 Bed	3	74.38
SF	C3		2 Bed	3	74.38
TF	C4		2 Bed	3	74.38
FF	C5		2 Bed	3	74.38
GF	D1		2 Bed	3	69.34
FF	D2		2 Bed	3	74.38
SF	D3		2 Bed	3	74.38
TF	D4		2 Bed	3	74.38
FF	D5		2 Bed	3	74.38
GF	E1		2 Bed	3	69.34
FF	E2		2 Bed	3	74.38
SF	E3		2 Bed	3	74.38
TF	E4		2 Bed	3	74.38
FF	E5		2 Bed	3	74.38

Kitchen/ Living/ Dining Area	Min. Area	Kitchen/ Living/ Dining Width	Min. Width	Master Bedroom Area	Min. Area	Width	Min. Width	Bed 2 Area	Min. Area	Width	Min. Width	Bed 3 Area	Min. Area	Width	Min. Width	WC	Bathroom	In-Suite 1	Store 1	Store 2	Store 3	Store 4	Store 5	Store 6	Total Store Area	Min. Area	Aspect	Amenity Area	Min Amenity Area
37.3	30	3.8	3.6	15.7	13	4	2.8	13	11.4	3.5	2.8					6	2.7	4.1	1.7	1.2					7	6	west	20	7
37.3	30	3.8	3.6	15.7	13	4	2.8	13	11.4	3.5	2.8					6	2.7	4.1	1.7	1.2					7	6	west	20	7
37.3	30	3.8	3.6	15.7	13	4	2.8	13	11.4	3.5	2.8					6	2.7	4.1	1.7	1.2					7	6	west	20	7
37.3	30	3.8	3.6	15.7	13	4	2.8	13	11.4	3.5	2.8					6	2.7	4.1	1.7	1.2					7	6	west	20	7
37.3	30	3.8	3.6	15.7	13	4	2.8	13	11.4	3.5	2.8					6	2.7	4.1	1.7	1.2					7	6	east	20	7
37.3	30	3.8	3.6	15.7	13	4	2.8	13	11.4	3.5	2.8					6	2.7	4.1	1.7	1.2					7	6	east	20	7
37.3	30	3.8	3.6	15.7	13	4	2.8	13	11.4	3.5	2.8					6	2.7	4.1	1.7	1.2					7	6	east	20	7
37.3	30	3.8	3.6	15.7	13	4	2.8	13	11.4	3.5	2.8					6	2.7	4.1	1.7	1.2					7	6	east	20	7
28.6	28	3.7	3.6	14.4	13	2.8	2.8	8.2	7.1	2.4	2.1					4.6	3.3	1.3	1.8	1.5	0.9	1.2			5.5	5	north-east	7.5	6
28.6	28	3.7	3.6	14.7	13	2.8	2.8	8.2	7.1	2.4	2.1					4.6	3.3	1	1.8	1.5	0.9	1.2			6.4	5	north-east	7.5	6
28.6	28	3.7	3.6	14.7	13	2.8	2.8	8.2	7.1	2.4	2.1					4.6	3.3	1	1.8	1.5	0.9	1.2			6.4	5	north-east	7.5	6
28.6	28	3.7	3.6	14.7	13	2.8	2.8	8.2	7.1	2.4	2.1					4.6	3.3	1	1.8	1.5	0.9	1.2			6.4	5	north-east	7.5	6
28.6	28	3.7	3.6	14.7	13	2.8	2.8	8.2	7.1	2.4	2.1					4.6	3.3	1	1.8	1.5	0.9	1.2			6.4	5	north-east	7.5	6
28.6	28	3.7	3.6	14.4	13	2.8	2.8	8.2	7.1	2.4	2.1					4.6	3.3	1.3	1.8	1.5	0.9	1.2			5.5	5	north-east	7.5	6
28.6	28	3.7	3.6	14.7	13	2.8	2.8	8.2	7.1	2.4	2.1					4.6	3.3	1	1.8	1.5	0.9	1.2			6.4	5	north-east	7.5	6
28.6	28	3.7	3.6	14.7	13	2.8	2.8	8.2	7.1	2.4	2.1					4.6	3.3	1	1.8	1.5	0.9	1.2			6.4	5	north-east	7.5	6
28.6	28	3.7	3.6	14.7	13	2.8	2.8	8.2	7.1	2.4	2.1					4.6	3.3	1	1.8	1.5	0.9	1.2			6.4	5	north-east	7.5	6
28.6	28	3.7	3.6	14.7	13	2.8	2.8	8.2	7.1	2.4	2.1					4.6	3.3	1	1.8	1.5	0.9	1.2			6.4	5	north-east	7.5	6
28.6	28	3.7	3.6	14.7	13	2.8	2.8	8.2	7.1	2.4	2.1					4.6	3.3	1	1.8	1.5	0.9	1.2			6.4	5	north-east	7.5	6
28.6	28	3.7	3.6	14.7	13	2.8	2.8	8.2	7.1	2.4	2.1					4.6	3.3	1	1.8	1.5	0.9	1.2			6.4	5	north-east	7.5	6
28.6	28	3.7	3.6	14.7	13	2.8	2.8	8.2	7.1	2.4	2.1					4.6	3.3	1	1.8	1.5	0.9	1.2			6.4	5	north-east	7.5	6
28.6	28	3.7	3.6	14.7	13	2.8	2.8	8.2	7.1	2.4	2.1					4.6	3.3	1	1.8	1.5	0.9	1.2			6.4	5	north-east	7.5	6
28.6	28	3.7	3.6	14.7	13	2.8	2.8	8.2	7.1	2.4	2.1					4.6	3.3	1	1.8	1.5	0.9	1.2			6.4	5	north-east	7.5	6

* 2 Bed Units are to 2Bed 3 Person Units

Summary of Terrace Unit Types 01 - 6

Terrace Unit Type 01;



Terrace Unit Type 04;



Terrace Unit Type 02;



Terrace Unit Type 05;



Terrace Unit Type 03;



Terrace Unit Type 06;



Summary of Terrace Unit Types 07 - 11

Terrace Unit Type 07;

D1 C1 C1 C1 D1
page 19 page 17 page 17 page 17 page 19



Terrace Unit Type 10;

D1 C2 C2 D1
page 19 page 18 page 18 page 19



Terrace Unit Type 08;

D1 C2 C2 C2 B1
page 19 page 18 page 18 page 18 page 15



Terrace Unit Type 11;

D1 A A A D1
page 19 page 14 page 14 page 14 page 19

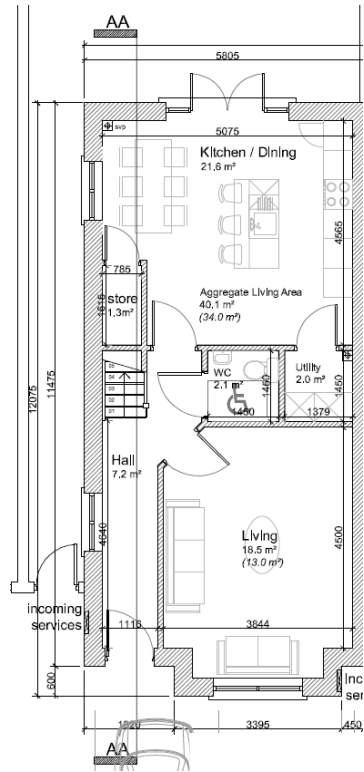


Terrace Unit Type 09;

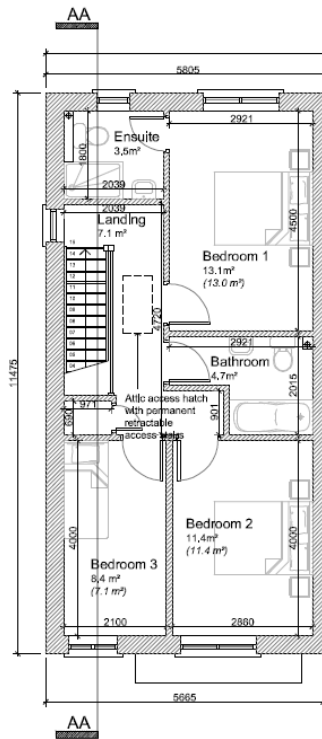
E C2 C2 C2 E
page 20 page 18 page 18 page 18 page 20



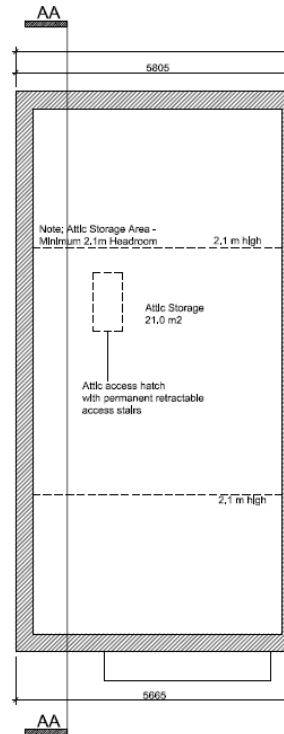
Terrace Unit Type B1



Ground Floor



First Floor



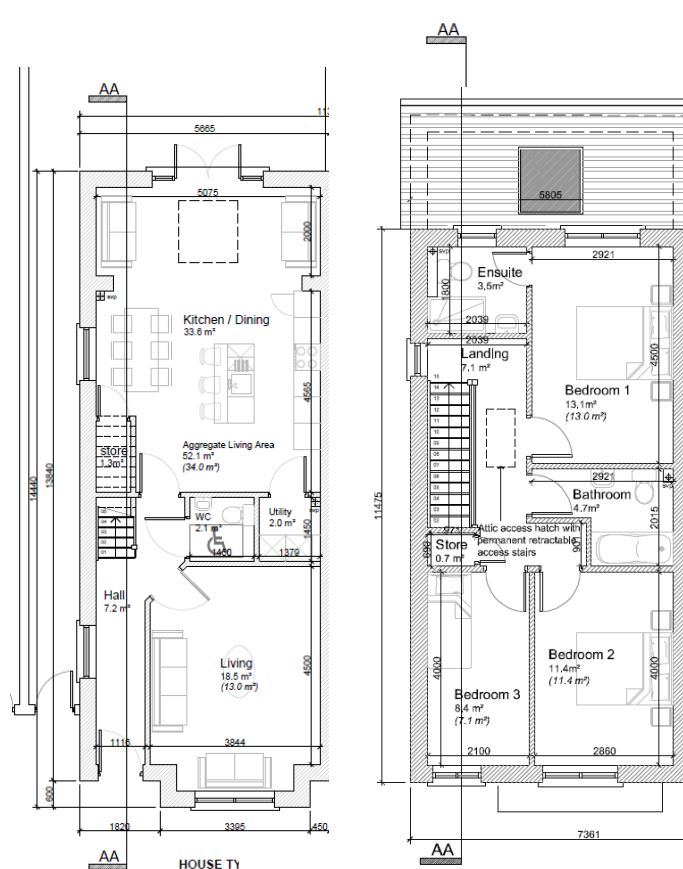
Attic Plan



Front Elevation

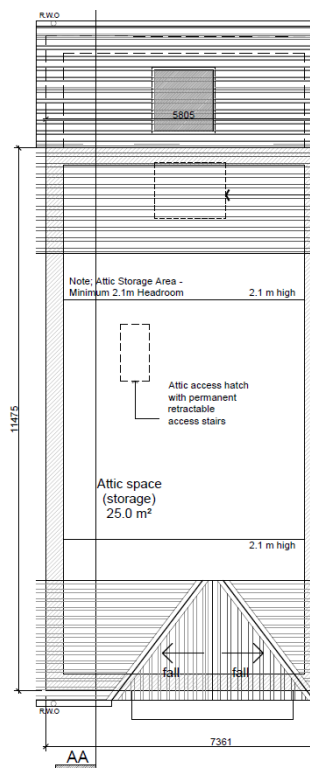
House Type B1 End of terrace	
LEGEND	
Ground Floor	
56.10 m ²	
First Floor	54.40 m ²
TOTAL	110.50
Number of Bedrooms: 3	
Number of Persons: 5	

Terrace Unit Type B2



Ground Floor

First Floor



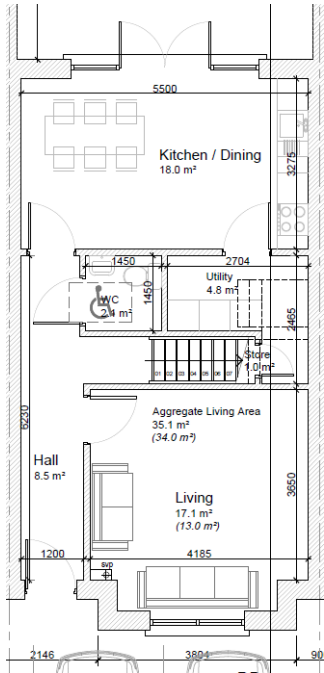
Attic Plan



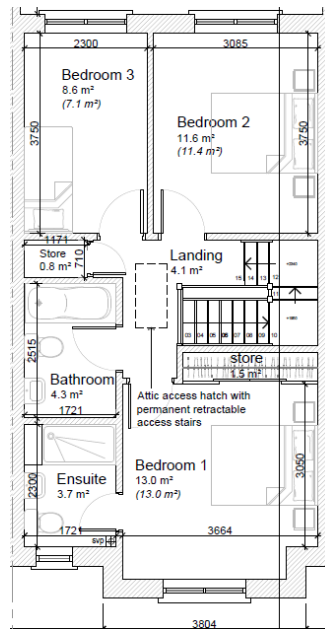
Front Elevation

House Type B2 End terrace (ext. Kit)	
LEGEND	
Ground Floor	
First Floor	68.10 m ²
TOTAL	122.50
Number of Bedrooms: 3	
Number of Persons: 5	

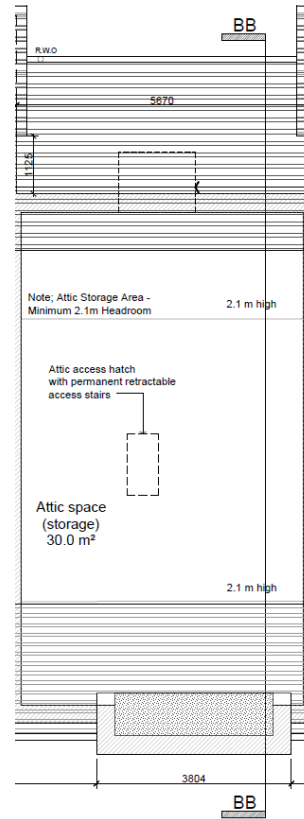
Terrace Unit Type C1



Ground Floor



First Floor



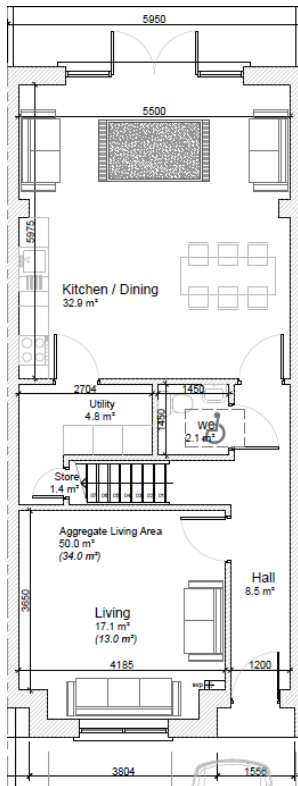
Attic Plan



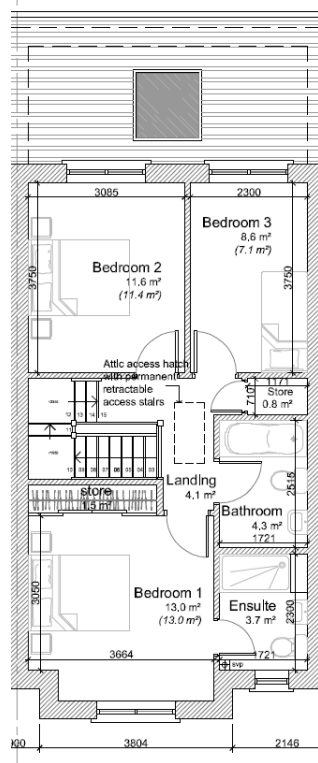
Front Elevation

House Type C1 Mid terrace	
LEGEND	
Ground Floor	54.70 m ²
First Floor	54.70 m ²
TOTAL	109.40
Number of Bedrooms: 3	
Number of Persons: 5	

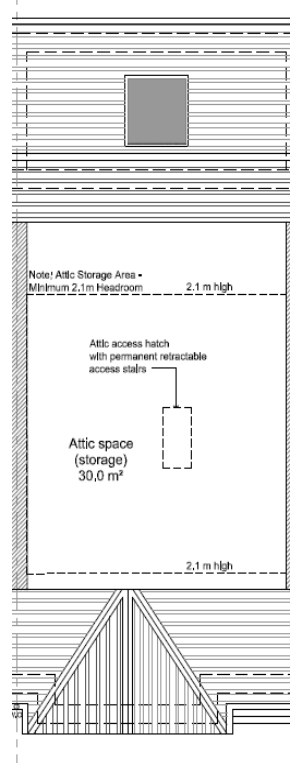
Terrace Unit Type C2



Ground Floor



First Floor



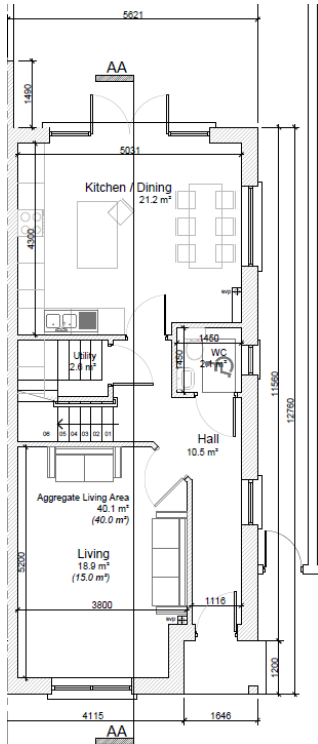
Attic Plan



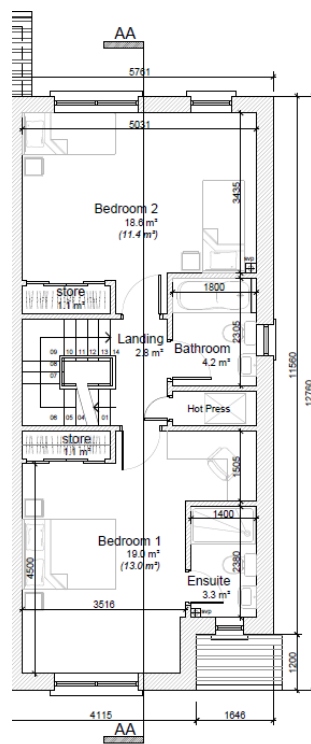
Front Elevation

House Type C2 Mid terrace (ext. Kit)	
LEGEND	
Ground Floor	
First Floor	69.90 m ² 54.70 m ²
TOTAL	124.60
Number of Bedrooms: 3	
Number of Persons: 5	

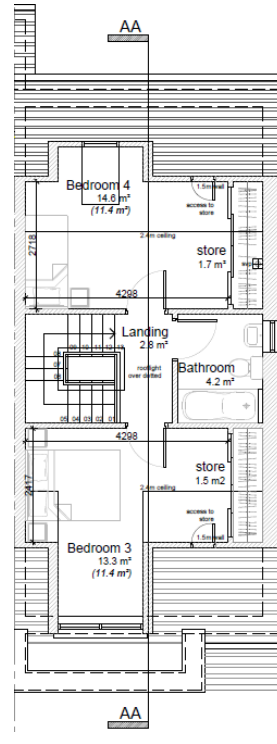
Terrace Unit Type D1



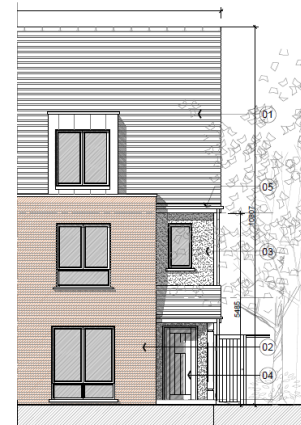
Ground Floor



First Floor



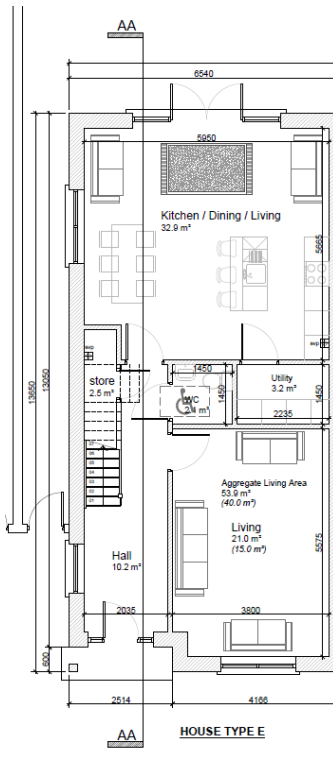
Second Floor



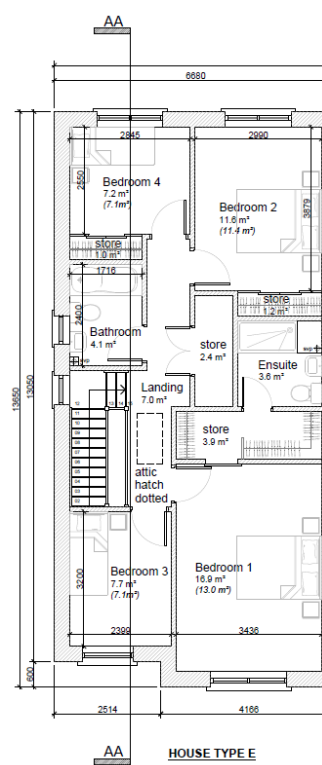
Front Elevation

House Type D1 End of terrace	
LEGEND	
Ground Floor	
First Floor	58.50 m ²
Second Floor	54.70 m ²
TOTAL	42.70 m ²
TOTAL 155.90	
Number of Bedrooms: 4	
Number of Persons: 7	

Terrace Unit Type E



Ground Floor

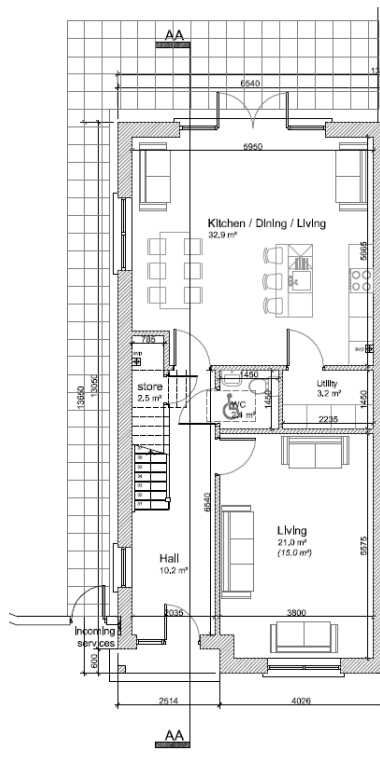


First Floor

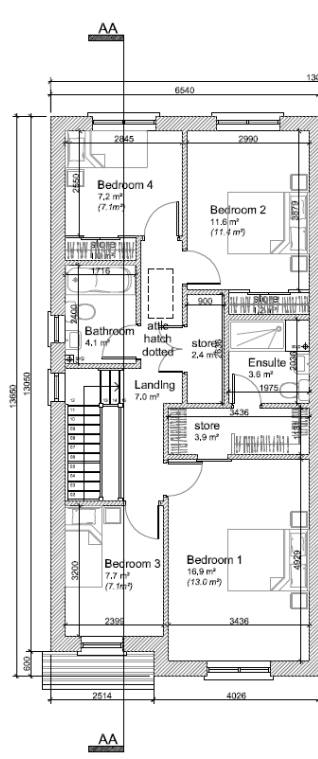


House Type E End of terrace	
LEGEND	
Ground Floor	
First Floor	75.40 m ²
TOTAL	150.80
Number of Bedrooms: 4	
Number of Persons: 6	

House Type 01



Ground Floor



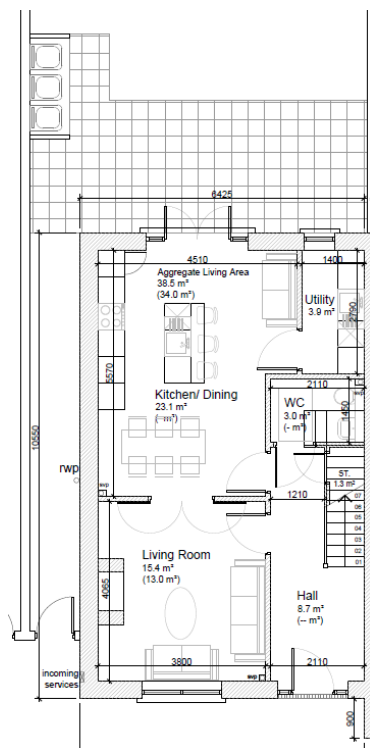
First Floor



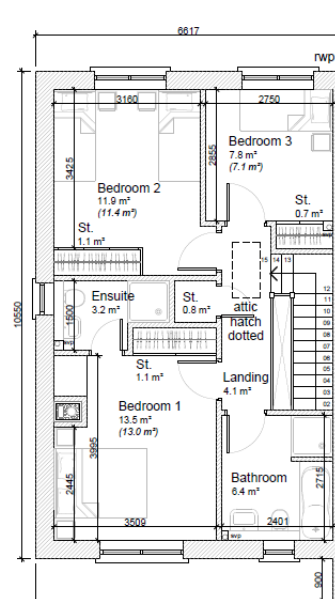
Front Elevation

House Type 01 Semi Detached	
LEGEND	
Ground Floor	75.40 m ²
First Floor	75.40 m ²
TOTAL	150.80
Number of Bedrooms: 4	
Number of Persons: 6	

House Type 02a



Ground Floor



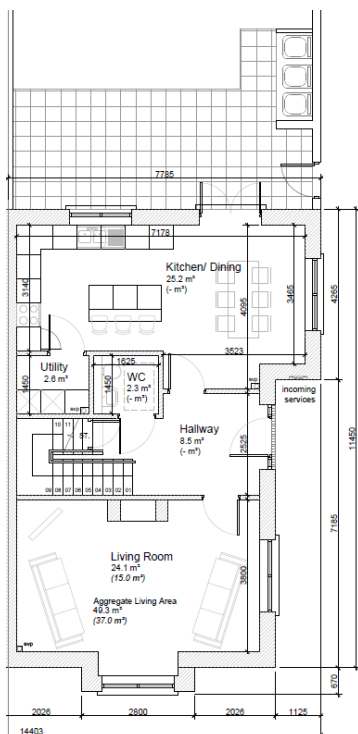
First Floor



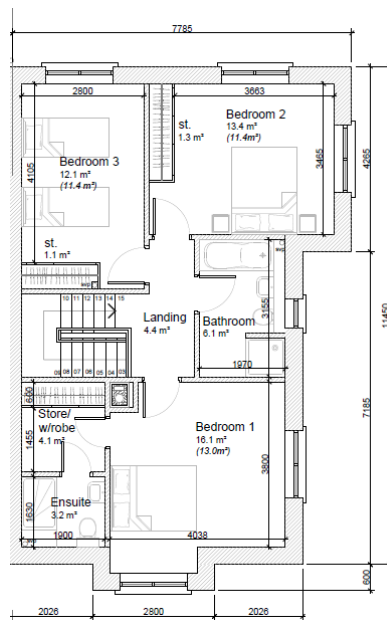
Front Elevation

House 02a Semi Detached	
LEGEND	
Ground Floor	62.80 m ²
First Floor	62.80 m ²
TOTAL	125.60
Number of Bedrooms: 3	
Number of Persons: 5	

House Type 02b



Ground Floor



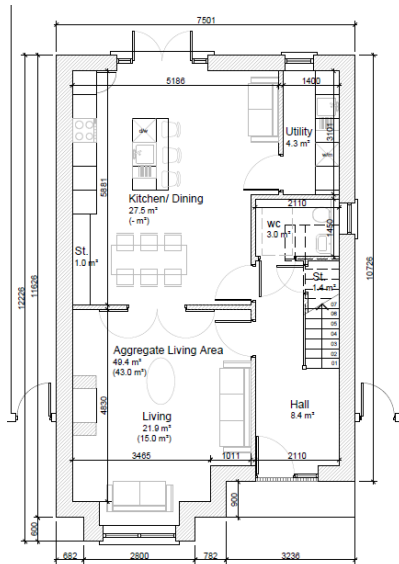
First Floor



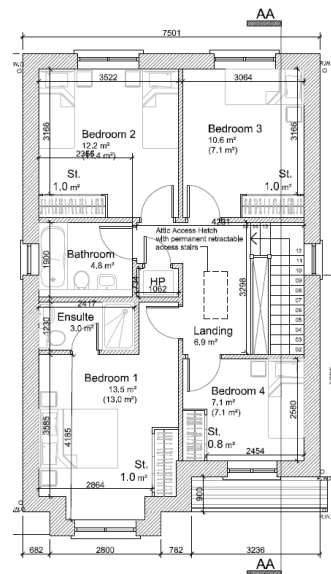
Front Elevation

House 02b Semi Detached corner	
LEGEND	
Ground Floor	69.50 m ²
First Floor	69.50 m ²
TOTAL	139.00
Number of Bedrooms: 3	
Number of Persons: 6	

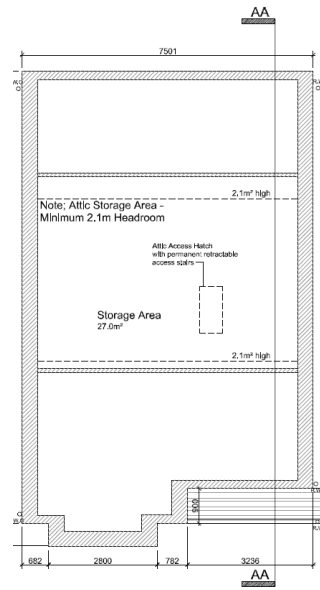
House Type 03



Ground Floor



First Floor



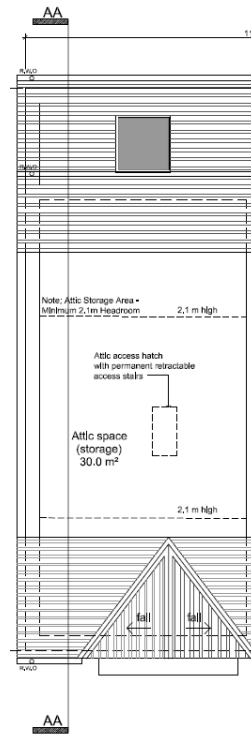
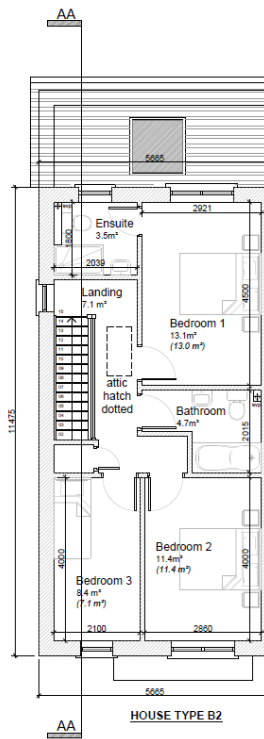
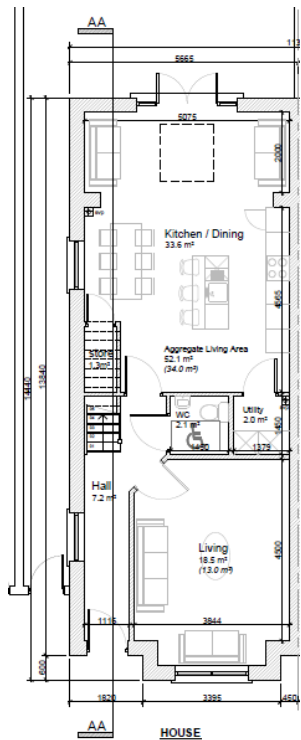
Attic Plan



Front Elevation

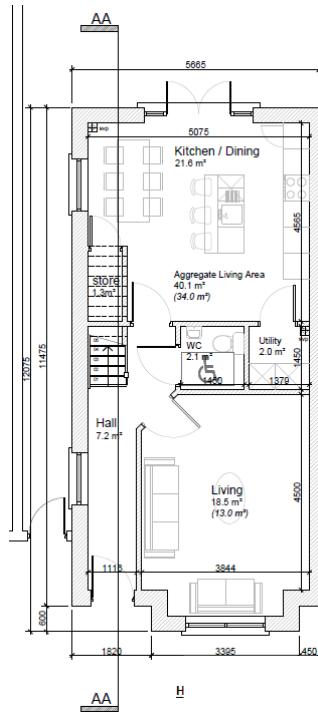
House 03 Detached	
LEGEND	
Ground Floor	71.20 m ²
First Floor	71.20 m ²
TOTAL	142.40
Number of Bedrooms: 4	
Number of Persons: 6	

House Type 04

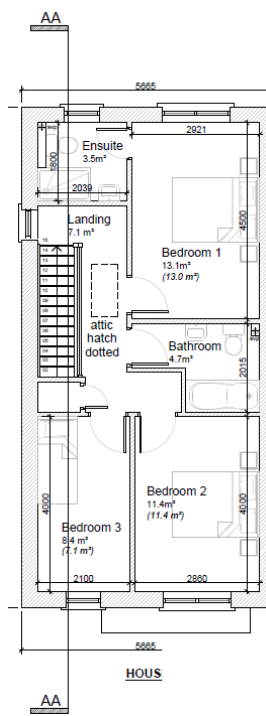


House 04 Semi Detached	
<u>LEGEND</u>	
Ground Floor	68.10 m ²
First Floor	54.40 m ²
TOTAL	122.50
<u>Number of Bedrooms: 3</u>	
<u>Number of Persons: 5</u>	

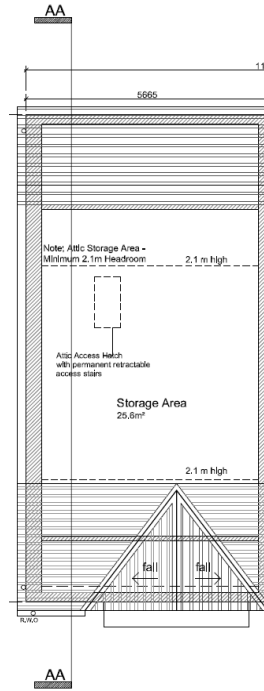
House Type 05



Ground Floor



First Floor



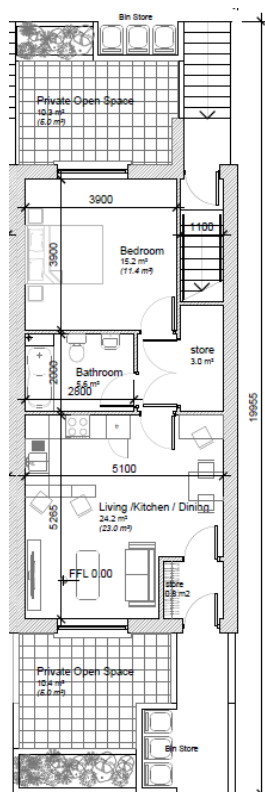
Attic Plan



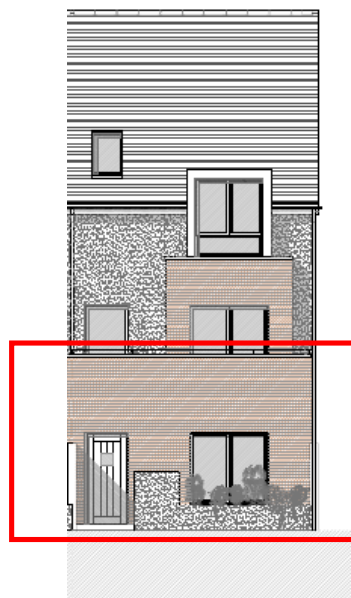
Front Elevation

House 05 Semi Detached	
<u>LEGEND</u>	
Ground Floor	
First Floor	56.10 m ²
TOTAL	110.50
<u>Number of Bedrooms: 3</u>	
<u>Number of Persons: 5</u>	

Apartment Type J (part of L complex)



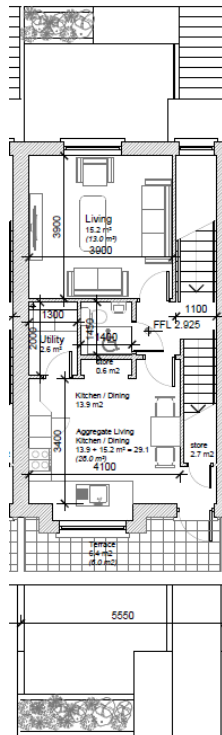
Ground Floor



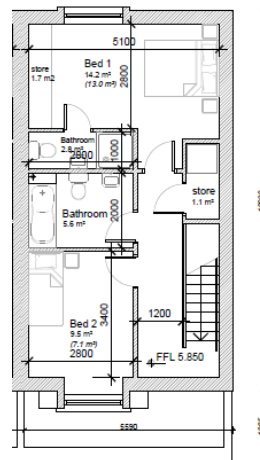
Front Elevation

Apartment Type J Ground Floor	
LEGEND	
Ground Floor	58.00 m ²
TOTAL	58.00
<u>Number of Bedrooms: 1</u>	
<u>Number of Persons: 2</u>	

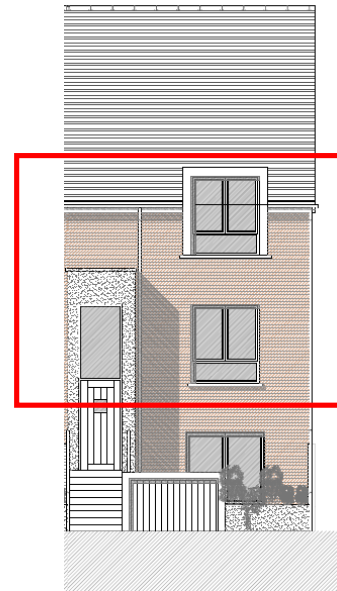
Duplex Type L (part of J complex)



First Floor



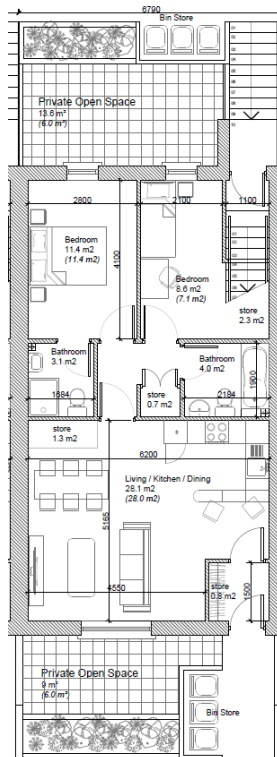
Second Floor



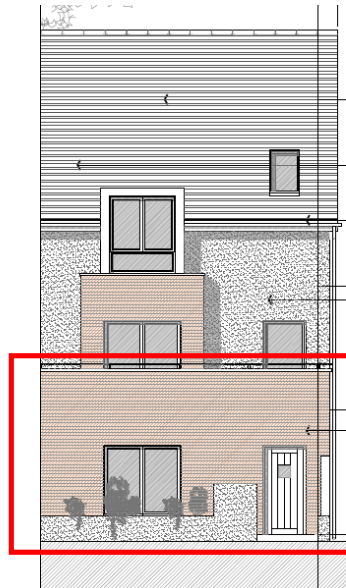
Front Elevation

Duplex Type L First and Second Floor	
LEGEND	
First Floor	48.40 m ²
Second Floor	48.40 m ²
TOTAL	96.80
Number of Bedrooms: 2	
Number of Persons: 3	

Apartment Type K (part of M complex)



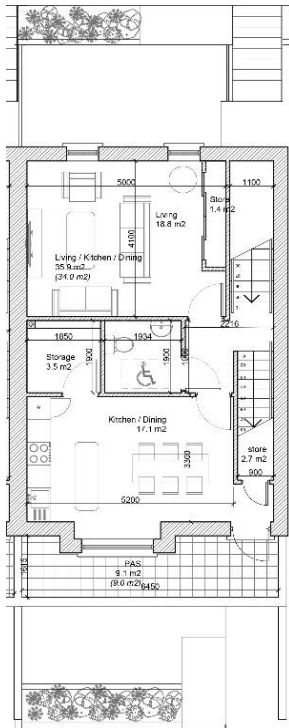
Ground Floor



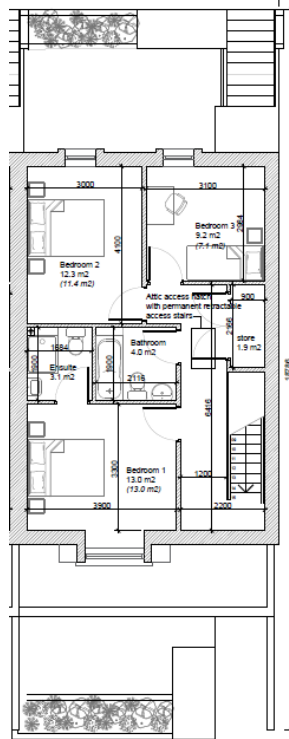
Front Elevation

Apartment Type K Ground Floor	
LEGEND	
Ground Floor	70.50 m ²
TOTAL	70.50
Number of Bedrooms: 2	
Number of Persons: 3	

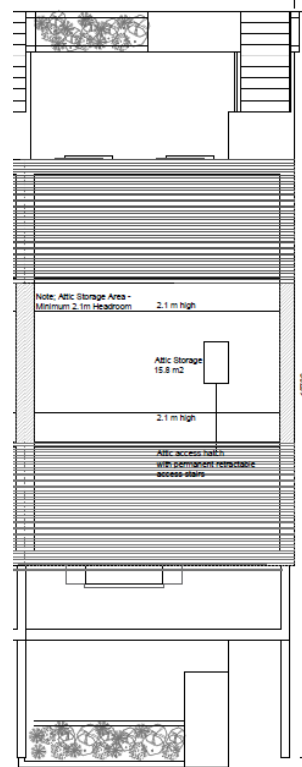
Duplex Type M (part of K complex)



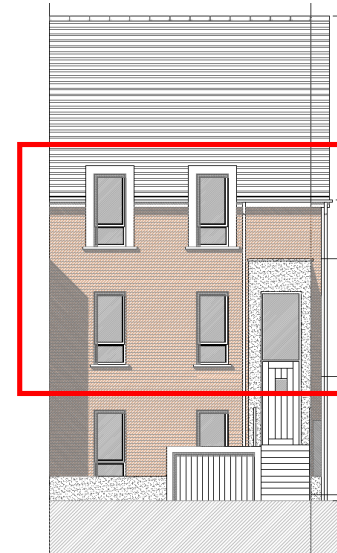
First Floor



Second Floor



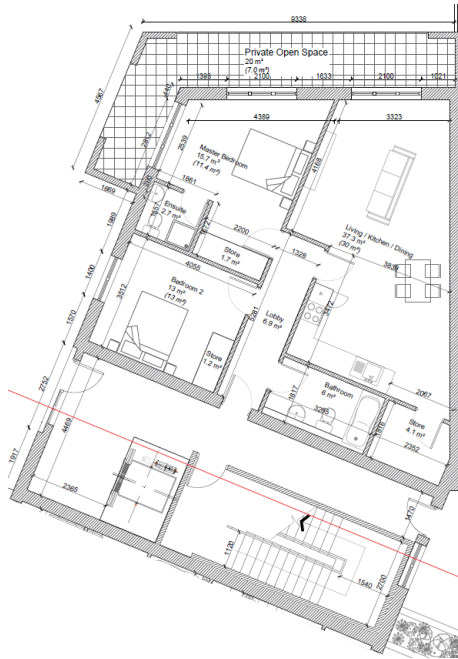
Attic Plan



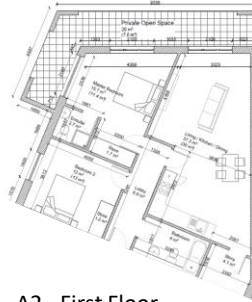
Front Elevation

Duplex Type M First and Second Floor	
LEGEND	
First Floor	54.40 m ²
Second Floor	55.60 m ²
TOTAL	110.00
Number of Bedrooms:	3
Number of Persons:	5

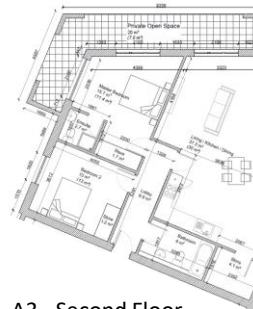
Apartment Block A1 – A5



A1 - Ground Floor



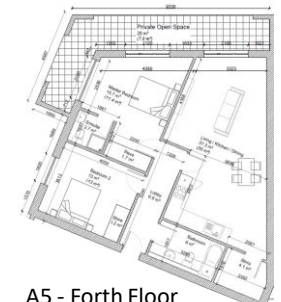
A2 - First Floor



A3 - Second Floor



A4 - Third Floor



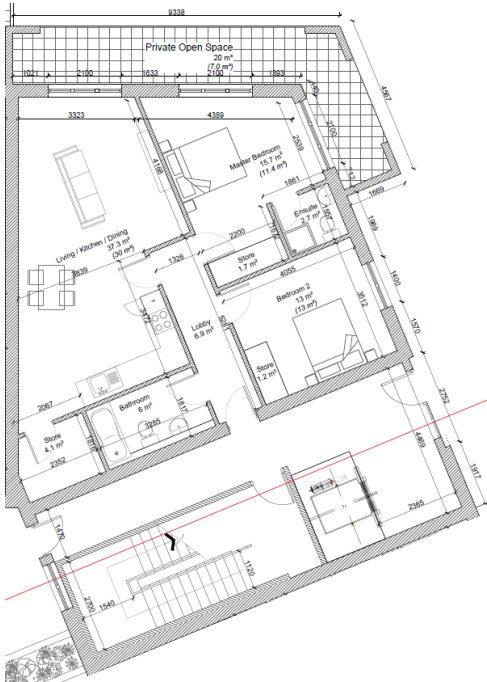
A5 - Forth Floor



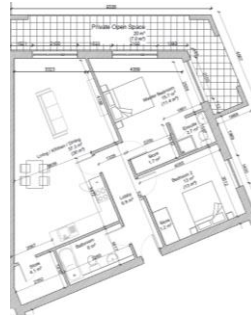
Front Elevation

Apartment Block A1 – A5	
LEGEND	
Ground Floor	91.76 m ²
First Floor	91.76
Second Floor	91.76
Third Floor	91.76
Forth Floor	91.76
Number of Bedrooms: 2	
Number of Persons: 4	

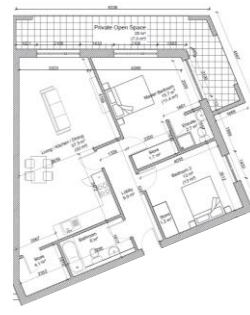
Apartment Block B1 – B5



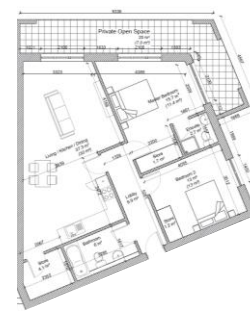
B1 - Ground Floor



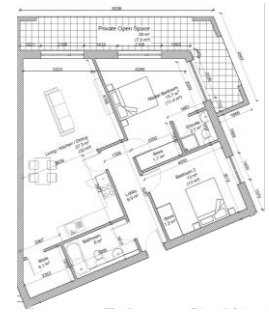
B2 - First Floor



B3 - Second Floor



B4 - Third Floor



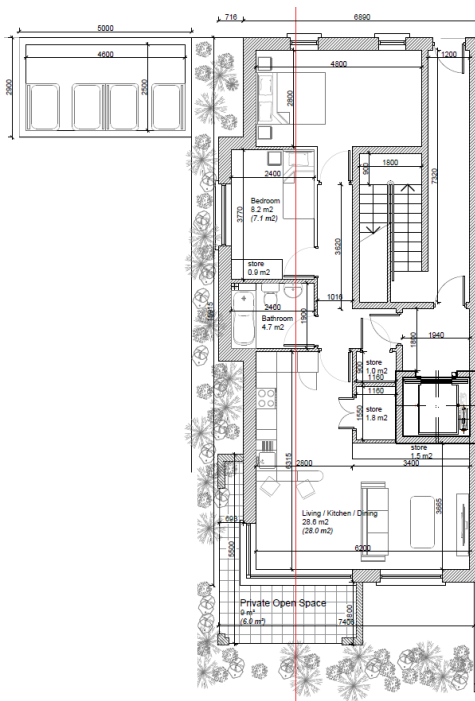
B5 - Forth Floor



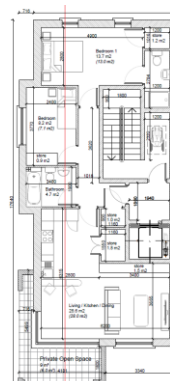
Front Elevation

Apartment Block B1 – B5	
LEGEND	
Ground Floor	
First Floor	91.76 m ²
Second Floor	91.76
Third Floor	91.76
Forth Floor	91.76
Number of Bedrooms: 2	
Number of Persons: 4	

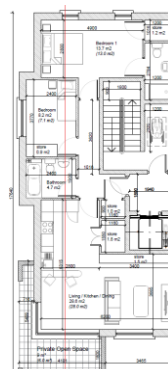
Apartment Block C1 – C5



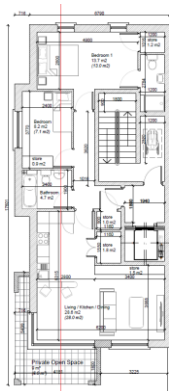
C1 - Ground Floor



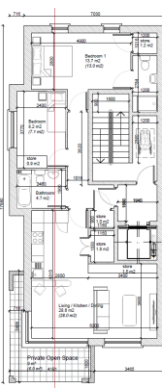
C3 - Second Floor



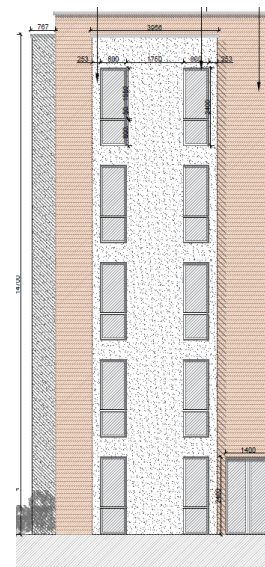
C5 - Forth Floor



C2 - First Floor



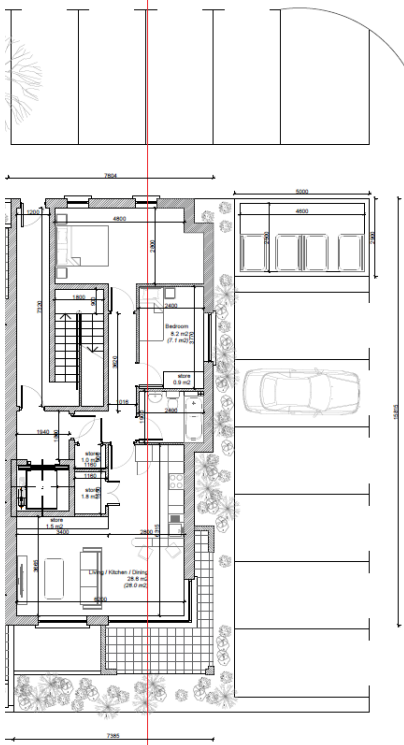
C4 - Third Floor



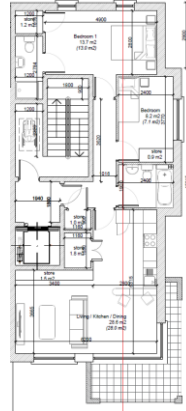
Front Elevation

Apartment Block C1 – C5	
LEGEND	
Ground Floor	
First Floor	69.34 m ² 74.38
Second Floor	74.38
Third Floor	74.38
Forth Floor	74.38
Number of Bedrooms: 2	
Number of Persons: 3	

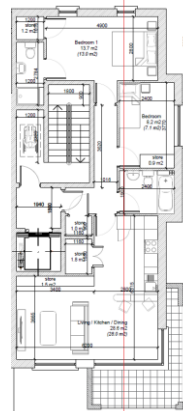
Apartment Block D1 – D5



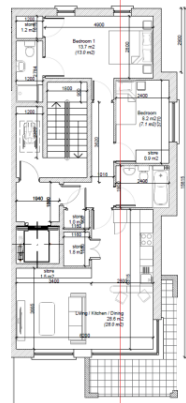
D1 - Ground Floor



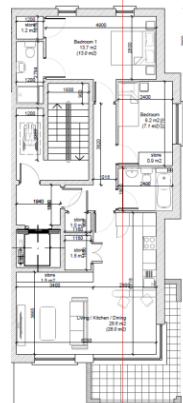
D3 - Second Floor



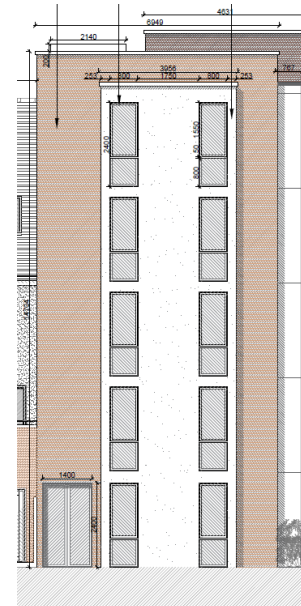
D5 - Forth Floor



D2 - First Floor



D4 - Third Floor



Front Elevation

Apartment Block D1 – D5

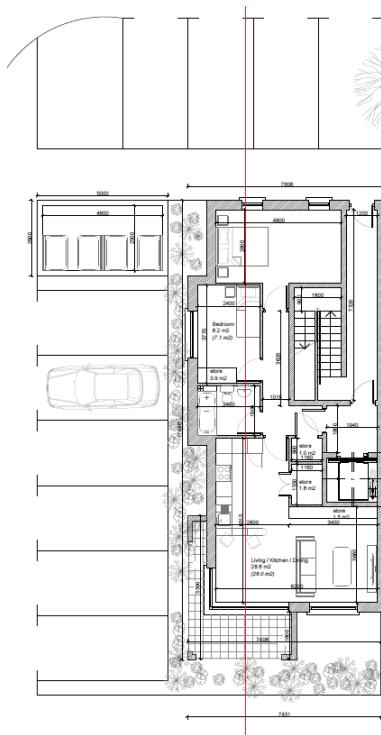
LEGEND

Ground Floor	
First Floor	69.34 m ² 74.38
Second Floor	74.38
Third Floor	74.38
Forth Floor	74.38

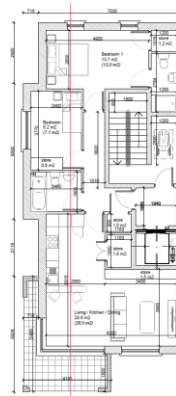
Number of Bedrooms: 2

Number of Persons: 3

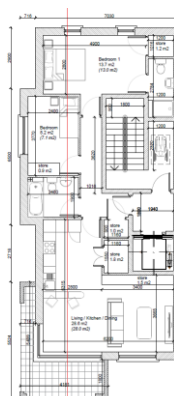
Apartment Block E1 – E5



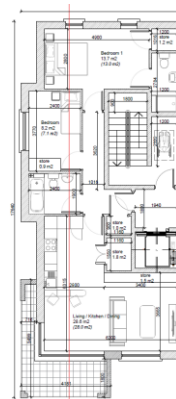
E1 - Ground Floor



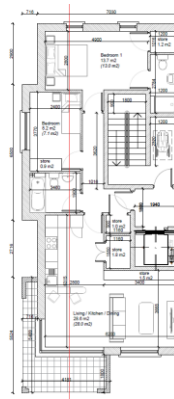
E3 - Second Floor



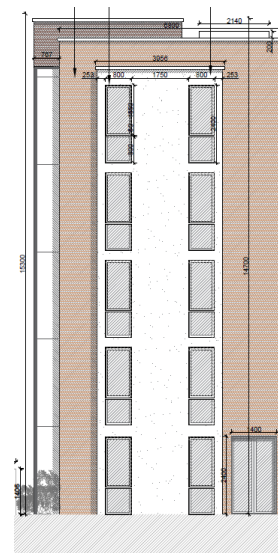
E5 - Forth Floor



E2 - First Floor



E4 - Third Floor



Front Elevation

Apartment Block E1 – E5

LEGEND

Ground Floor

First Floor 69.34 m²
74.38

Second Floor
74.38

Third Floor 74.38

Forth Floor 74.38

Number of Bedrooms: 2

Number of Persons: 3